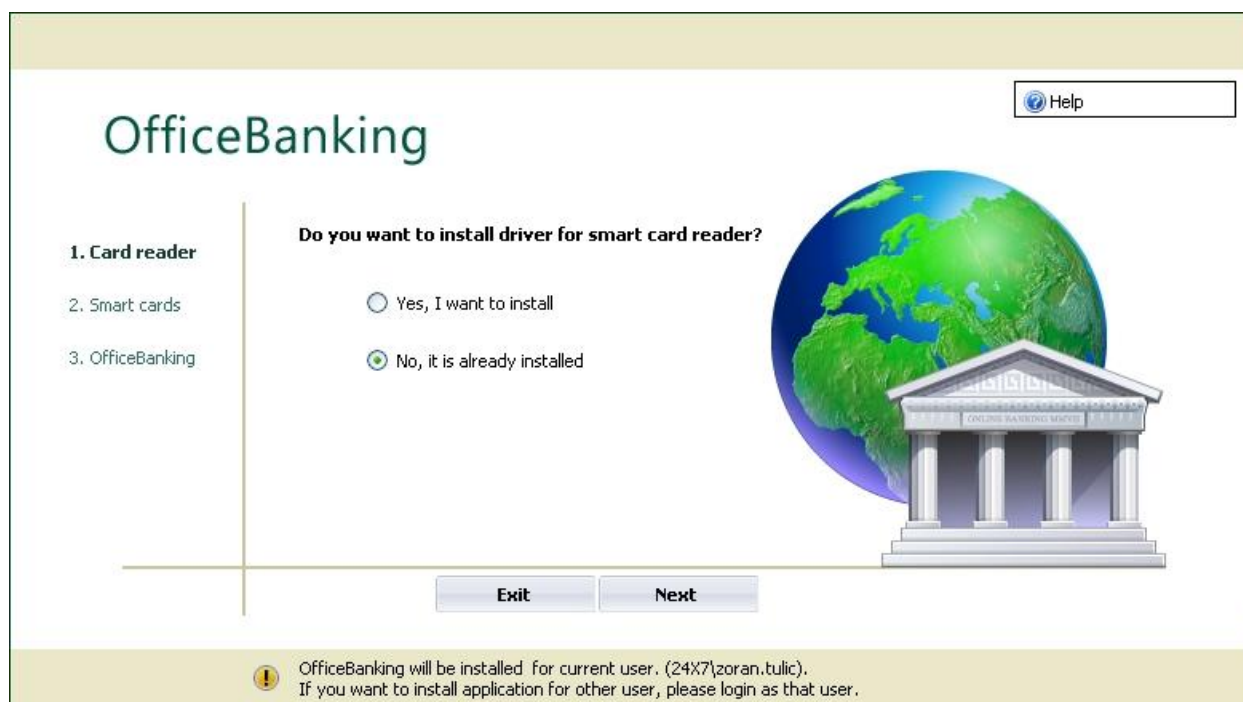


Manual for installation OfficeBanking Desktop application



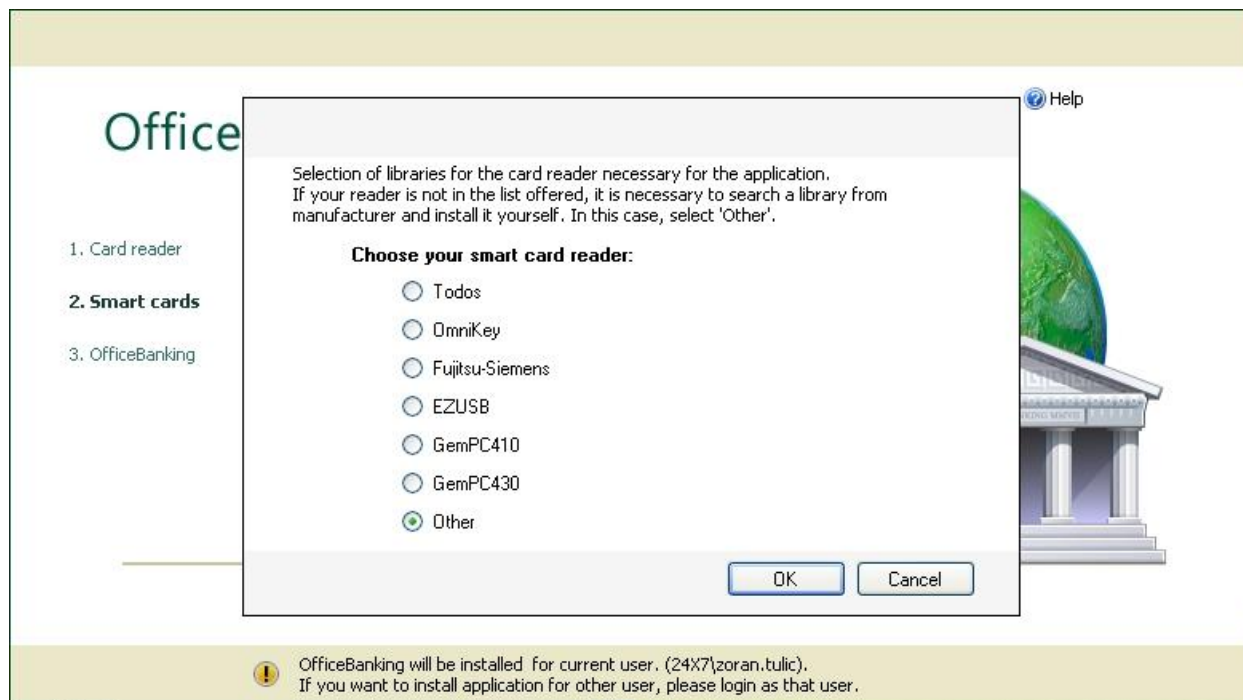
- Click **Startup** icon from the installation disc.
- If the system lacks the components necessary for the application, it will automatically start installing the required software.
- Setup Wizard will then offer option of installing a library (driver) for the card reader.



- If the reader has been installed on your system, select No, I already have it installed and click **Next**.

Ext/Int//PUBLIC

- If the reader has not been installed click Yes, I want it installed and click Next. A window will open with a selection of libraries for the most frequently used card readers. You can choose the right model and then click choose to start the installation of the libraries.



Ext/Int//PUBLIC

ASSECO

SOUTH EASTERN EUROPE

- In the next step the wizard gives you the option to install a library (driver) for the cards.
- If the libraries are installed on the system, select No, I already have it installed and click **Next**.
- If libraries (drivers) are not installed on your system, click Yes, I want to install it and click **Next**.



Ext/Int//PUBLIC

Asseco SEE d.o.o. Beograd, Bulevar Milutina Milankovića 19g, 11070 Beograd, Srbija, tel: +381 11 2013 111, fax: + 381 11 3015 132, e-mail: contact@asseco-see.rs, Matični broj: 07432461, Registarski broj: 01307432461, Šifra delatnosti: 72200, PIB: SR100389094, Agencija za privredne registre, broj rešenja registracije: BD 14724/2005, Banca Intesa a.d. Beograd, Milentija Popovića 7b, Broj poslovnog računa: 160-7940-21, upisan i uplaćen novčani kapital: 118.898,93 EUR, ASSECO SEE d.o.o. je jednočlano društvo. www.asseco-see.com

- An alert will appear to insert the card into the reader. If you insert the card, click **Next**, after which installation of the necessary libraries will start.



Ext/Int//PUBLIC



SOUTH EASTERN EUROPE

- In the next step the wizard will give you a choice between Desktop and Enterprise versions of OfficeBanking. Choose a version and click **Next**.
- If libraries (drivers) are not installed on your system, click Yes, I want to install them and click **Next**.



Ext/Int//PUBLIC

Asseco SEE d.o.o. Beograd, Bulevar Milutina Milankovića 19g, 11070 Beograd, Srbija, tel: +381 11 2013 111, fax: + 381 11 3015 132, e-mail: contact@asseco-see.rs, Matični broj: 07432461, Registarski broj: 01307432461, Šifra delatnosti: 72200, PIB: SR100389094, Agencija za privredne registre, broj rešenja registracije: BD 14724/2005, Banca Intesa a.d. Beograd, Milentija Popovića 7b, Broj poslovnog računa: 160-7940-21, upisan i uplaćen novčani kapital: 118.898,93 EUR, ASSECO SEE d.o.o. je jednočlano društvo. www.asseco-see.com

- Installation window will appear, click Install. After this step the installation process will be completed and the program will start running.



Ext/Int//PUBLIC

- When the installation is complete, application will launch with the option to log in using a card. You need to enter PIN and click Next.

Settings Help

Log in

Log in

Username: Ana Komazec/24x7.co.yu Root CA

PIN: ****

If You login on your card using the user name and password, and do not have PIN code, [click here to convert the user name and password to the PIN.](#)

Can not login?

- Try to solve the problem [here.](#)
- If you want you can send us information about errors by [e-mail.](#)

To get started You need:

- to sign up with your card...
- to connect to the Internet and activate your installation...
- to migrate data if you use the electronic payment application Fx2004 (This step is optional)
- to connect to the bank and download the most recent data for all Your accounts

Cancel Next >

English Application version: 1.2012.10720.1

Ext/Int//PUBLIC

ASSECO

SOUTH EASTERN EUROPE

- After logging in, the application will ask of you to enter an activation code. Enter it and click **Next**.

OfficeBanking

Settings Help

Application activation

Enter activation code:

Activation code is data that contains 16 digits you get in OfficeBanking package from the bank. If you cannot find this information, contact our technical support service: 011/201-3131

To get started You need:

- ✓ to sign up with your card...
- to connect to the Internet and activate your installation...
- i to migrate data if you use the electronic payment application Fx2004 (This step is optional)
- to connect to the bank and download the most recent data for all Your accounts

<Back Cancel Next >

English Application version: 1.2012.10720.1

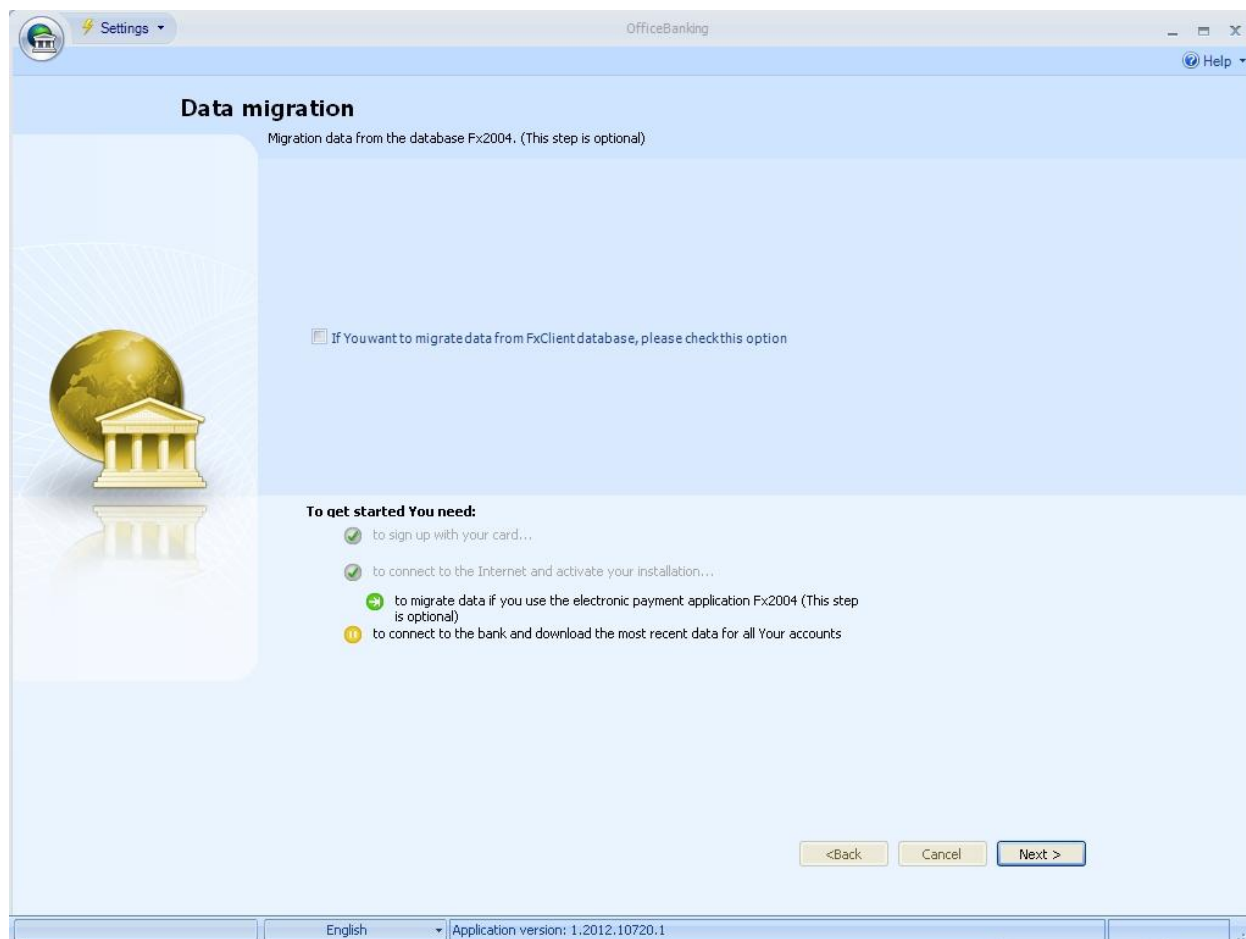
Ext/Int//PUBLIC

Asseco SEE d.o.o. Beograd, Bulevar Milutina Milankovića 19g, 11070 Beograd, Srbija, tel: +381 11 2013 111, fax: + 381 11 3015 132, e-mail: contact@asseco-see.rs, Matični broj: 07432461, Registarski broj: 01307432461, Šifra delatnosti: 72200, PIB: SR100389094, Agencija za privredne registre, broj rešenja registracije: BD 14724/2005, Banca Intesa a.d. Beograd, Milentija Popovića 7b, Broj poslovnog računa: 160-7940-21, upisan i uplaćen novčani kapital: 118.898,93 EUR, ASSECO SEE d.o.o. je jednočlano društvo.
www.asseco-see.com

ASSECO

SOUTH EASTERN EUROPE

- In this step, it is possible to migrate data from FxClient database if there is one on the system. This step is optional and can be done subsequently through the application. Click **Next**.



Ext/Int//PUBLIC

Asseco SEE d.o.o. Beograd, Bulevar Milutina Milankovića 19g, 11070 Beograd, Srbija, tel: +381 11 2013 111, fax: + 381 11 3015 132, e-mail: contact@asseco-see.rs, Matični broj: 07432461, Registarski broj: 01307432461, Šifra delatnosti: 72200, PIB: SR100389094, Agencija za privredne registre, broj rešenja registracije: BD 14724/2005, Banca Intesa a.d. Beograd, Milentija Popovića 7b, Broj poslovnog računa: 160-7940-21, upisan i uplaćen novčani kapital: 118.898,93 EUR, ASSECO SEE d.o.o. je jednočlano društvo. www.asseco-see.com

ASSECO

SOUTH EASTERN EUROPE

- The next step is to choose the time period for which you want to download data from bank. Select period and click **Next**.

OfficeBanking

Settings Help

Downloading data from bank

Select the period for which you wish to obtain information from banks

Downloading data from banks

Select the period for which you wish to obtain information from banks:

For the last day

To get started You need:

- to sign up with your card...
- to connect to the Internet and activate your installation...
- to migrate data if you use the electronic payment application Fx2004 (This step is optional)
- to connect to the bank and download the most recent data for all Your accounts

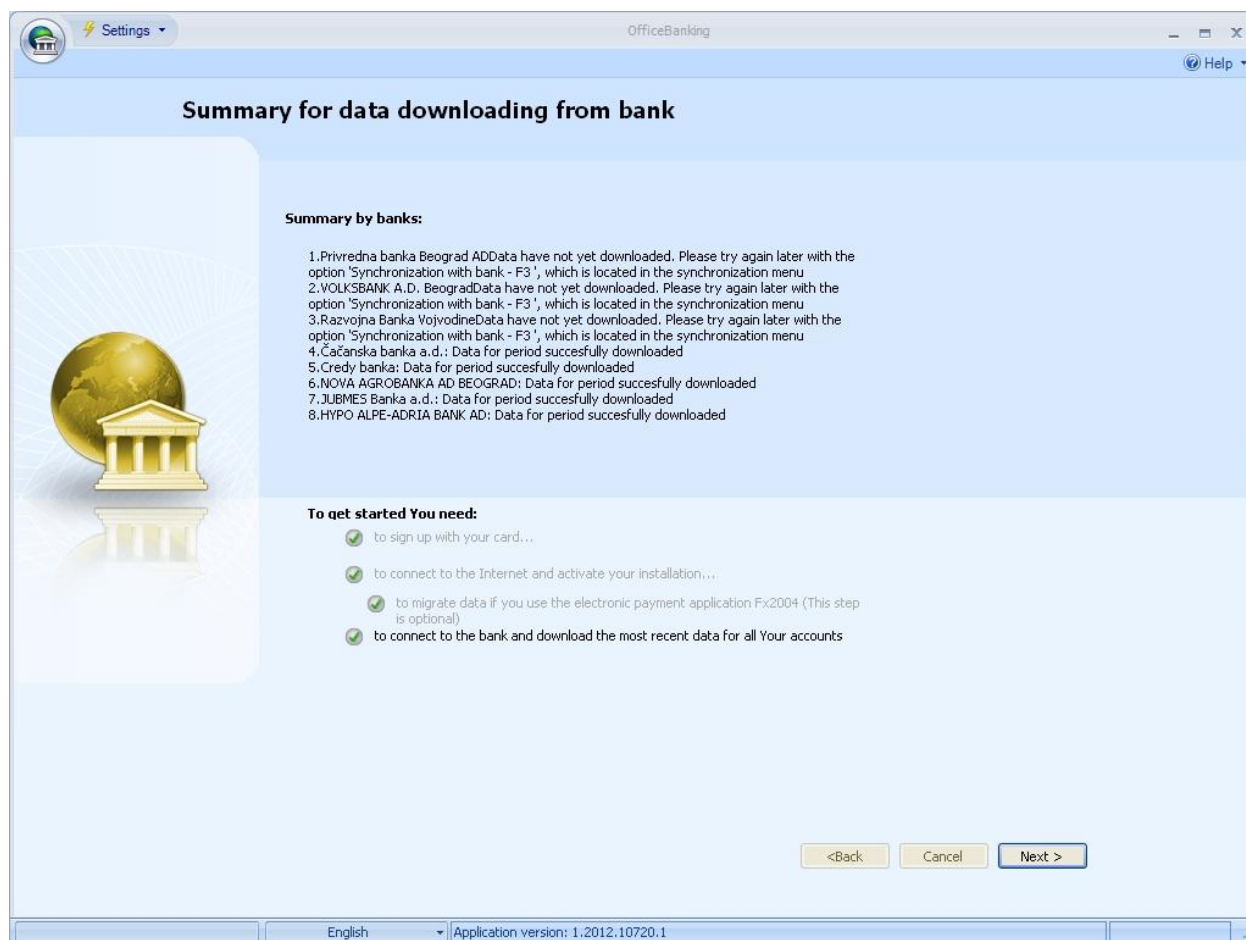
<Back Cancel Next >

English Application version: 1.2012.10720.1

Ext/Int//PUBLIC

Asseco SEE d.o.o. Beograd, Bulevar Milutina Milankovića 19g, 11070 Beograd, Srbija, tel: +381 11 2013 111, fax: + 381 11 3015 132, e-mail: contact@asseco-see.rs, Matični broj: 07432461, Registarski broj: 01307432461, Šifra delatnosti: 72200, PIB: SR100389094, Agencija za privredne registre, broj rešenja registracije: BD 14724/2005, Banca Intesa a.d. Beograd, Milentija Popovića 7b, Broj poslovnog računa: 160-7940-21, upisan i uplaćen novčani kapital: 118.898,93 EUR, ASSECO SEE d.o.o. je jednočlano društvo. www.asseco-see.com

- You will be presented a report on the takeover of data from banks. Click **Next**.



You have completed the installation, and you can start working.

Ext/Int//PUBLIC

Asseco SEE d.o.o. Beograd, Bulevar Milutina Milankovića 19g, 11070 Beograd, Srbija, tel: +381 11 2013 111, fax: + 381 11 3015 132, e-mail: contact@asseco-see.rs, Matični broj: 07432461, Registarski broj: 01307432461, Šifra delatnosti: 72200, PIB: SR100389094, Agencija za privredne registre, broj rešenja registracije: BD 14724/2005, Banca Intesa a.d. Beograd, Milentija Popovića 7b, Broj poslovnog računa: 160-7940-21, upisan i uplaćen novčani kapital: 118.898,93 EUR, ASSECO SEE d.o.o. je jednočlano društvo.
www.asseco-see.com